

## TECHNICAL SERVICE BULLETIN

**SUBJECT:** BEP fuse change

**Products Affected:** Electronic Relay Box (BEP) part number JE341121 installed on vehicles with in-service dates before October 2005 and equipped with Telma models AC50-55, AC51-00, AC61-25, AC61-60, or AD72-00.

**Effective Date:** 1-MAR-06

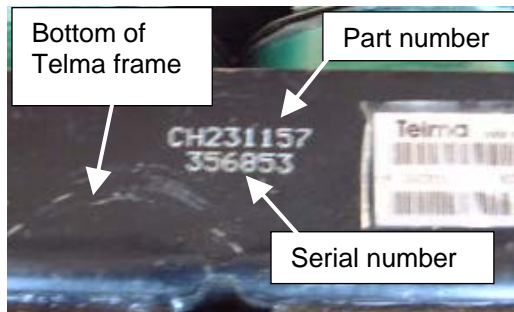
Telma is committed to a philosophy of continuous improvement as a way of enhancing the end-user's experience with our product. We are continually examining service data to see if we can identify any trends, which highlight information that could be useful to our customers.

This service bulletin relates to a fuse upgrade to improve protection of the 12 volt Telma electronic relay box (BEP) part number JE341121.

This is a mandatory upgrade that must be made within 90 days of release of this bulletin.

### Upgrade Procedure

1. Check that the date-in-service of your vehicle is prior to October 2005. This upgrade is not required if your vehicle was put in service after October 2005.
2. Find the part number of the Telma unit on the bottom of the frame of the Telma.



3. Find the Telma part number in the table below and order the corresponding fuse upgrade kit. The fuse upgrade kit includes a replacement fuse and a fuse installation tool.

Telma model	Telma part number	Fuse Upgrade Kit part number
AC50-55	CN201154	TID13021
AC51-00	CM231158	TID13021
AC61-25	CE361158	TID13021
AC61-25	CE361152	TID13021
AC61-60	CF231152	TID13022
AD72-00	BE201152	TID13022

4. Install the upgraded fuse according to the instructions provided in this bulletin.
5. Return to Telma by mail the Labor Reimbursement Form and the two original fuses to obtain payment of \$15.00 for labor to make the upgrade.

The fuse upgrade kit installation instructions and the Labor Reimbursement Form are included in this bulletin.

Note: The fuse upgrade kit should be used only for Telma installations equipped with Telma models listed in the table above. Do not install this upgrade for other Telma models not listed in this bulletin.

Contact Telma customer support at 800 797-7714 if you have any questions.

This document is the exclusive property of TELMA RETARDER INC. It cannot be copied, modified, forwarded, or given to any third party without prior agreement from TELMA RETARDER INC. Any infringement will immediately involve legal action.

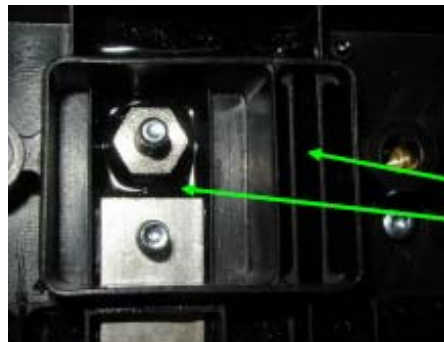
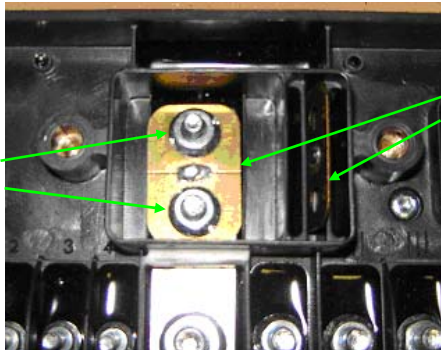
## 12V BEP Fuse Upgrade Installation Procedure

Note: Disconnect the Telma “+” cable from the battery before work begins

1. Loosen the four screws and remove the cover from the BEP
2. Loosen the two screws and remove the fuse cover



3. Remove the 2 fuse retaining nuts. Remove the existing fuse that is installed and put aside for later use. Remove the spare fuse from the spare fuse receptacle and put aside for later use also.



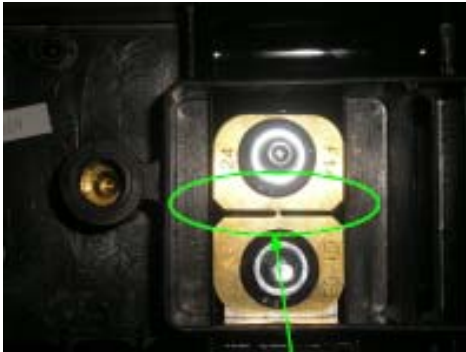
4. Install the upgrade fuse in place of the fuse removed.
5. Position the installation tool to prevent fuse damage when tightening the retaining nuts
6. Tighten the fuse retaining nuts to 53 lb-in (6Nm)



This document is the exclusive property of TELMA RETARDER INC. It cannot be copied, modified, forwarded, or given to any third party without prior agreement from TELMA RETARDER INC. Any infringement will immediately involve legal action.

This document is the exclusive property of TELMA RETARDER INC. It cannot be copied, modified, forwarded, or given to any third party without prior agreement from TELMA RETARDER INC. Any infringement will immediately involve legal action.

7. Make sure the edges of the fuse do not touch.



8. Remove the installation tool and place in the spare fuse receptacle.

9. Re-install the fuse cover.

10. Re-install the BEP cover.

Tighten screws to 17 lb-in (2Nm)



11. Road test to verify proper operation.

12. Fill in Labor Reimbursement Form and mail to Telma along with the original fuses that were removed.



TELMA RETARDER, INC.  
1521 Morse Avenue, Elk Grove Village, IL 60007  
Tel: (847) 593-1098 • Fax: (847) 593-3592

**TIL15008**

Revised: 1-MAR-2006

## JE341121 Fuse Replacement Labor Reimbursement Form

Telma part number \_\_\_\_\_

Telma serial number \_\_\_\_\_

BEP date code \_\_\_\_\_

Chassis Identification Number  
(VIN) last 8 \_\_\_\_\_

Chassis Make / Model \_\_\_\_\_

Date upgrade kit was Installed \_\_\_\_\_

Name \_\_\_\_\_

Address \_\_\_\_\_

City, State, Zip Code \_\_\_\_\_

Telephone \_\_\_\_\_

Mail to Telma at the address below to obtain payment of \$15.00 for labor to make the upgrade.

Telma Inc  
1501 Morse Avenue  
Elk Grove Village, IL 60007

This document is the exclusive property of TELMA RETARDER INC. It cannot be copied, modified, forwarded, or given to any third party without prior agreement from TELMA RETARDER INC. Any infringement will immediately involve legal action.